

DISCLAIMER: The Block Design Collective ("BDC") does not make any representations or warranties with respect to the accuracy or suitability of this information, and persons making use of this information do so at their own risk. BDC disclaims liability for damages of any kind, including any special, indirect, or consequential damages, which may result from use of this information. This information is not to be interpreted as indicating compliance with, or waiver of, any applicable building code, ordinance, standard or law.

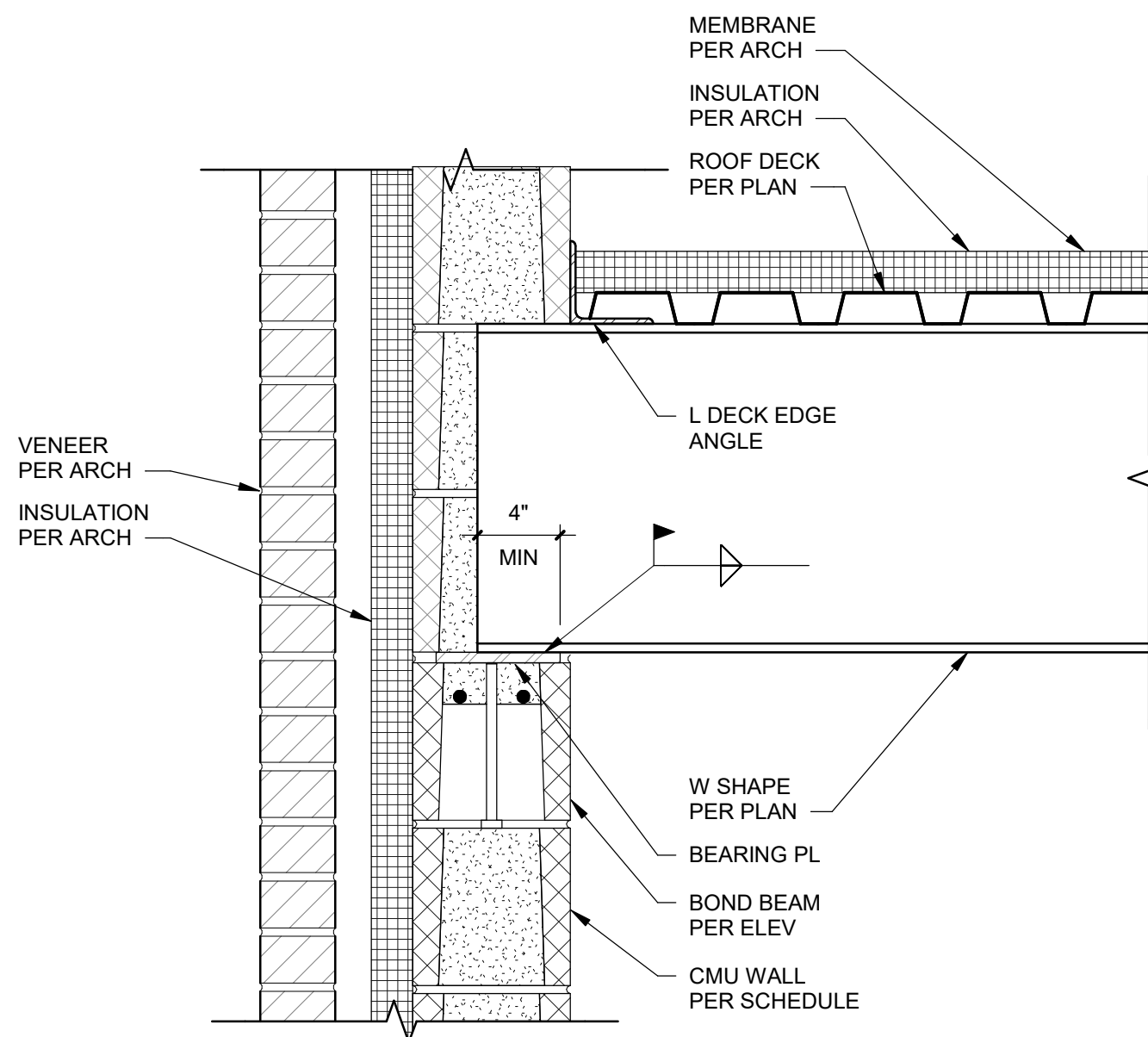
**DESIGNER NOTES:**

CODE REQUIREMENTS

1. SEE BEARING PLATE DETAIL FOR CAPACITY OF PLATE SHOWN.

DESIGN REQUIREMENTS

1. BOND BEAM IS SHOWN GRAPHICALLY AND SHOULD BE LOCATED BELOW THE BEARING ELEVATION SUCH THAT THE HEADED STUDS ENGAGE THE BOND BEAM COURSE.
2. STEPPED BOND BEAMS SHOULD BE CONSIDERED FOR SLOPED ROOF CONDITIONS.
3. CONSIDERATION SHOULD BE GIVEN FOR DIFFERENTIAL MOVEMENT DUE TO THE DIFFERENT THERMAL COEFFICIENTS FOR STEEL AND MASONRY SINCE THE W SHAPE IS WELDED TO THE BEARING PLATE, ESPECIALLY AT AREAS WITH HIGH STIFFNESS (CORNERS, WALL INTERSECTIONS, ETC.)



4

**TYPICAL BEAM BEARING**

SCALE: 1 1/2" = 1'-0"